



Floor Plan(e)

Gomba made his way around the house, drafting the familiar locations and solving the puzzles within. Of course, with only seven rooms in the draft pool the placement options are limited, but eventually Gomba found a layout he was a fan of.

Whilst looking for the way out, Gomba realized - the hallways link the rooms! All he had to do was work out what was linking them ("without using the same one twice", Gomba noted) and then...well...

How will Gomba leave the house?



Pick one to draft:

ATM

Distillery

Jewel House

Optometrist's Room

Reptile Room

Stables

Weaving Shed

With thanks to (alphabetically): Aurath, Autumn Leaves, djmathman, kays, Proxentauri, Rubrica, short_circuit, and woomyrogue, and the fumbgy chat for bringing us all joy <3

ATM

Gomba pushed open the door to be met with a single ATM terminal. An assortment of bills was poking out of it, and Gomba picked them up. Putting them in his inventory, he noticed they interleaved well with some of the other objects he was carrying...

Inventory

- Having a lot to do (4)
- Blue Pixar fish (4)
- One piece of corn (3)
- Someone who catches long, slippery fish (5)
- Cure (4)
- Popular rhythm game (3)
- Sitting an exam again (8)
- Single-stranded genetic molecule (3)
- Famous word square (5)
- Neckwear (3)

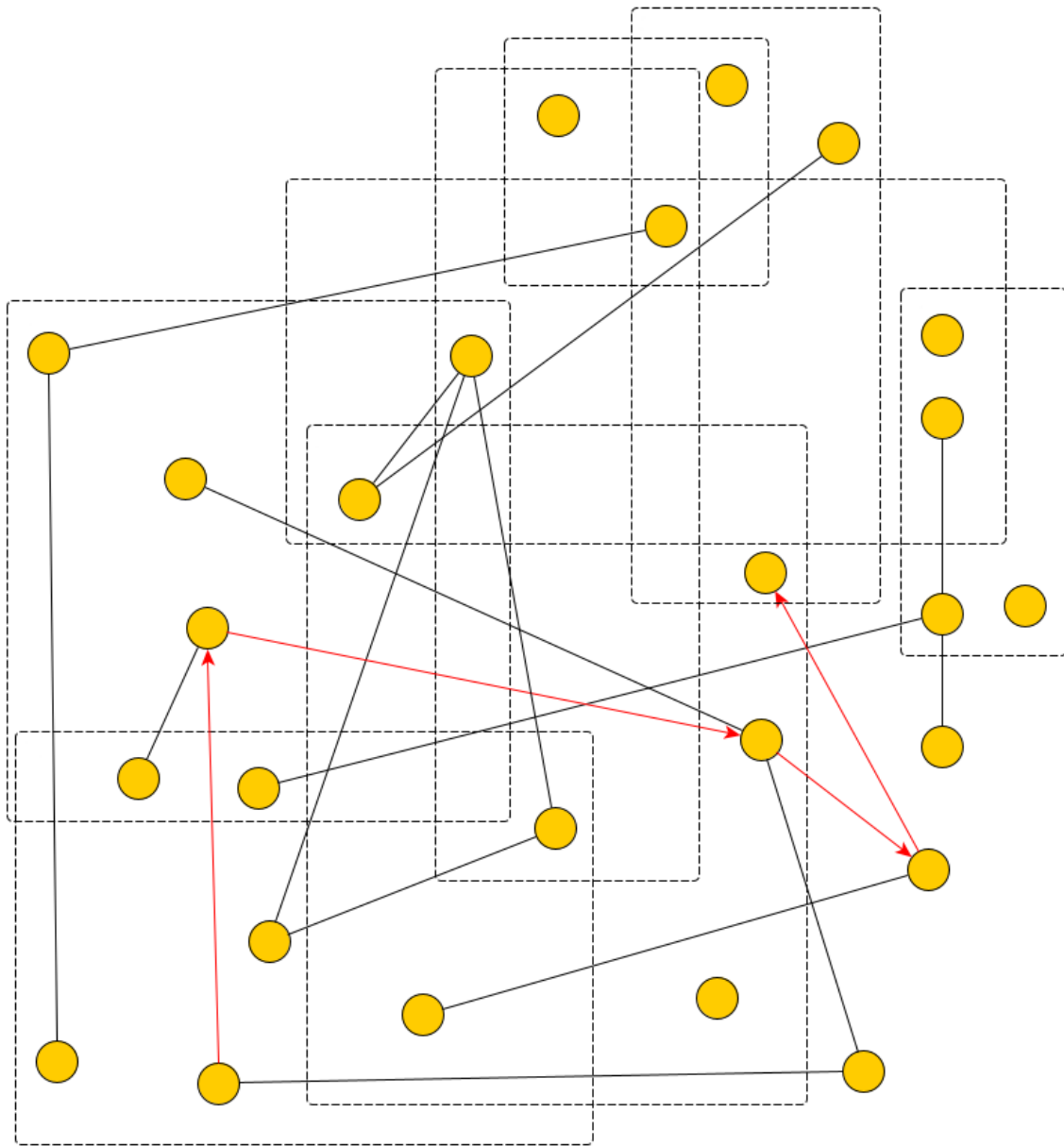
Bills





Distillery

Gomba pushed open the door to be met with the earthy, floral scents of barley pearls fermenting in a mash tun. On the wall was a brewer's chart showing how all the basic building blocks could be set together and some interesting pairings...



Pairings

A high school club
The building blocks
A printer option
Chirality
A drink
A bathroom set
Part of a computer
Symmetry

A bathroom set
Part of a talk
A type of music
Part of a company
A question type
A set of lines
A question type

Jewel House

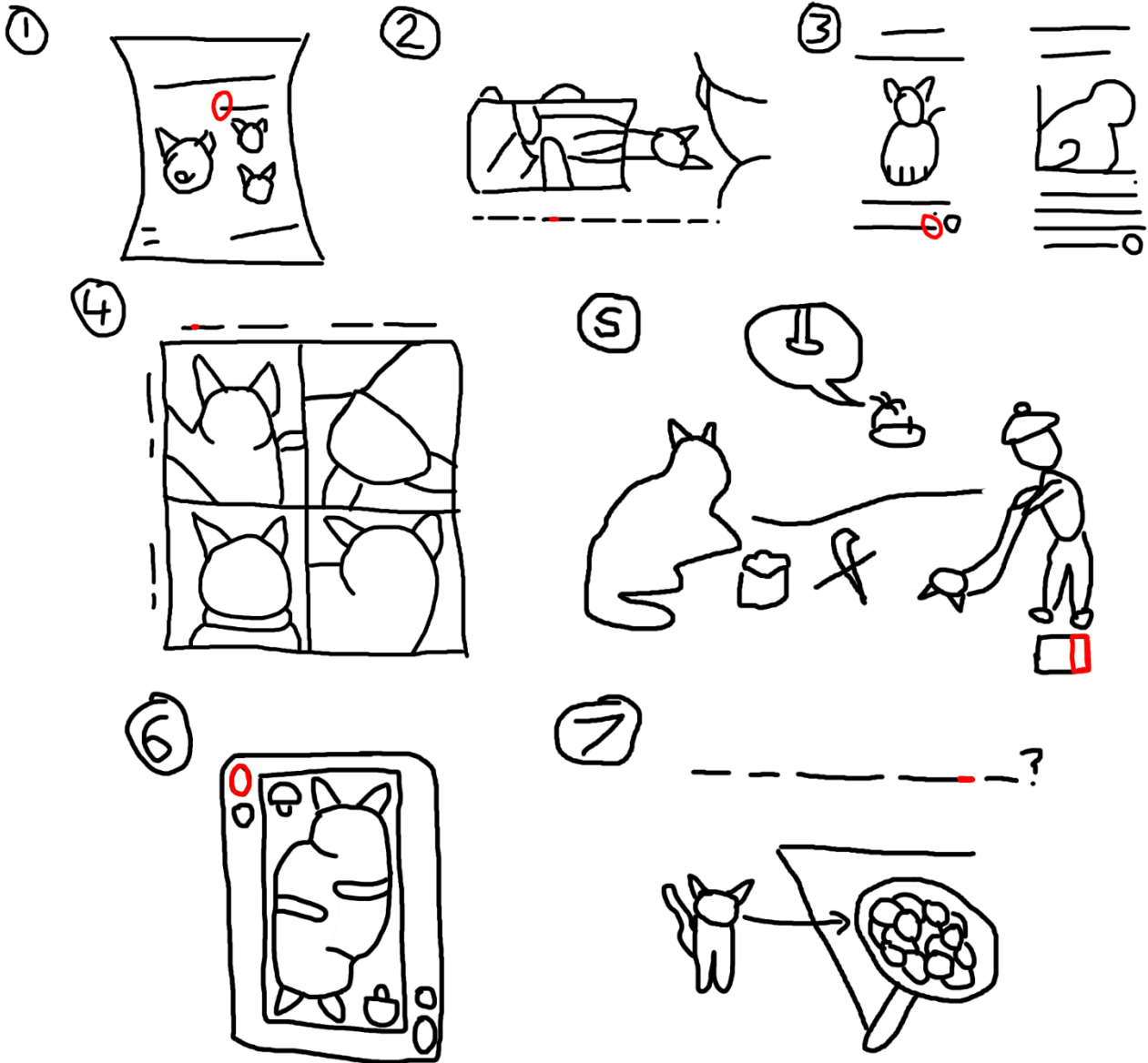
Gomba stepped through the stone portal into a lavishly decorated room. Several glass exhibits filled the space, all holding pieces of the crown jewels in several boxes. Each exhibit seemed to be labelled with three bits of information as to their contents...

The total number of gems per set of boxes is given. One statement on the boxes is false and the other two are true.

	Blue Box	White Box	Black Box	Gem total
A	There are exactly 4 gems in total between the boxes	The other two boxes contain equal numbers of gems	No box contains exactly 3 gems	3
B	The gem is in the box with the false statement	The blue box and white box contain the same number of gems	The gem is not in the white box or the black box	1
C	The white box is false	The black box is false	There are as many gems in each box as the number of 'x's in their respective clues	4
D	The gem is in an adjacent box	The gem is in an adjacent box	The gem is in an adjacent box	1
E	The white box contains more gems than the black box	This box is empty	The blue box contains more gems than both the white box and the black box	2
F	No box contains exactly 3 gems	Every box contains more gems than there are gems in total to the right of it	The false box contains the most gems	3
G	The white box is the only box to contain an even number of gems	The black box contains an odd number of gems	The blue box contains the most gems	3
H	The gems are split equally between the other two boxes	There are fewer gems in total in the adjacent boxes than in this one	The false box contains exactly 2 gems	4

Optometrist's Room

Gomba stepped through into a white room and paused. It looked like a vet's office but...his vision was blurry and most of the detail was missing. He could at least still pick out a few useful shapes from the wall posters...



Reptile Room

Gomba stepped into the Reptile Room and was immediately pushed back by the rush of heat. He looked over at the tanks and saw a strange snake within...

Hebi-Ichigo clues are as normal, though the snakes are not. Snakes (1-5) are instead friendly enough to be willing to look at each other and form one continuous loop by touching head-to-tail, but not so friendly as to form any squares or touch the loop extraneously, even diagonally.

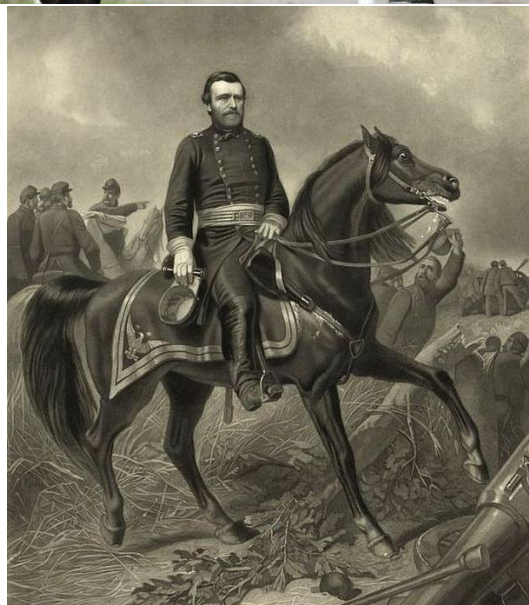
K	A	T	S	U	U	N	E
A	←4	S	E	C	R	E	A
T	E	U	4↑	N	C	L	E
	H		E	A	T	S	R
E	P	U	T	4↓	E	D	2↓
A	5↑	T	T	I	R	E	G
R	E	W	←1	O		S	I
2↑	E	R	G	L	E	A	N

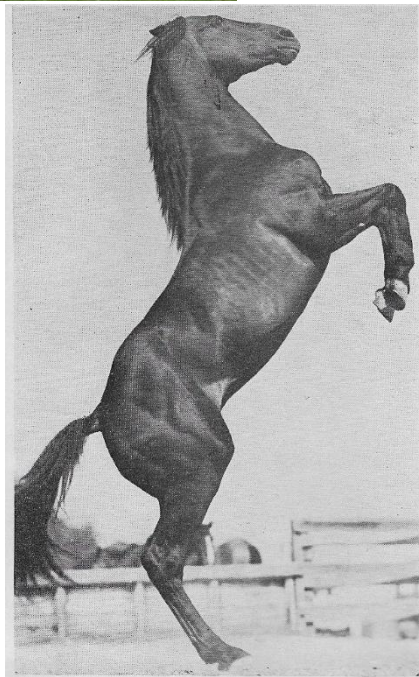
<https://puzz.link/p?hebi/8/8/i34i14d0.a0.i24b22a15i31a0.b12g>

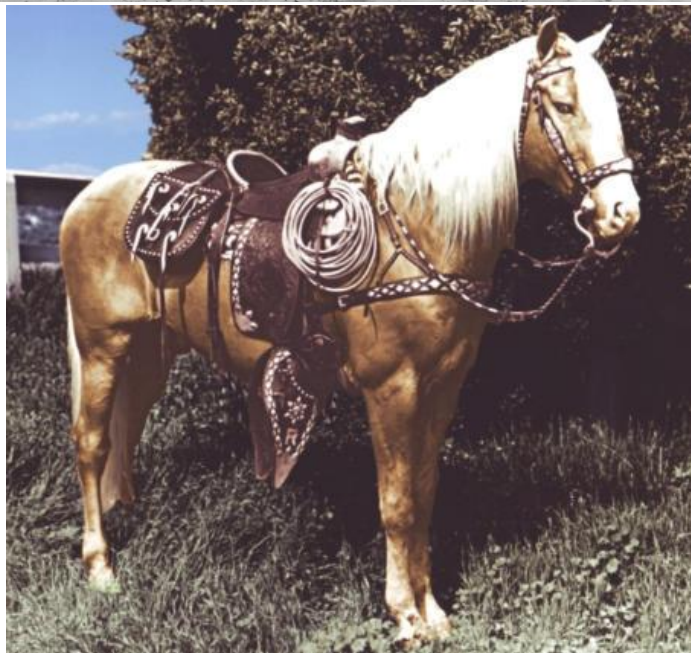
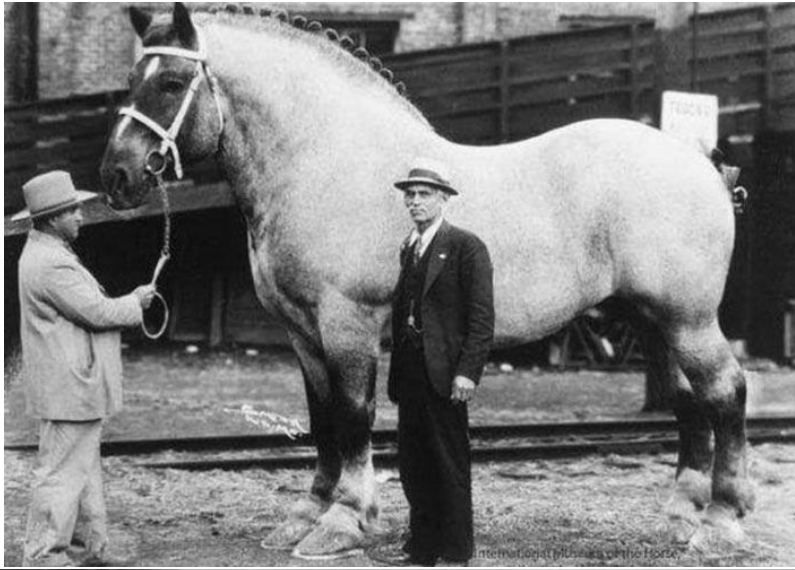
Stables

The floor changed to straw and dirt as Gomba stepped into the stables. A dozen stalls for horses were set out but their nameplates were a bit cryptic to read...

Tenor in 🐎's state amongst irregular scalpers
Damages nest 🐎 hides within
Camel taking ecstasy in tussle with 🐎 tail
🐎's gutless - messily embalm removing heart
Brewed drink by pasture 🐎 hides in
Poor student spending 500 pence, abandoning 🐎 first
Hairdos are disheveled seeing 🐎 departing
Leave holding principal 🐎
Control of 🐎 is property
Before 🐎 came legendary bird of prey
Baked, as 🐎's rider?
🐎, not cookie







Weaving Shed

Gomba stepped into a long room full of tapestries. Each one had been meticulously hand-painted and documented the travels and stories of the artist over a decade (the most recent was a work in progress on the loom). Looking closer at the abstract shapes and colors hung up, Gomba felt he could derive some meaning...

- Blue crosses at least half-full - Green circles under half-full + Brown crosses at least half full - Yellow triangles at least half-full
- Cycling days - Miles cycled on 21-30 floor days + 1-10 days pre-Covid
- | Difference in the number of 21-25 floor and 26-30 floor days | - | Difference in miles cycled on days under 10k steps and miles on 10k+ days | - Number of 31+ floor days
- Election + (Hot * Away)/(Rain)
- Fewest number of days not in the office in one month + Fewest number of days in the office in one month
- Missing data - 31+ floors
- (Number of days with Covid)/ (Number of days after the eclipse with 20k+ steps)
- Red squares with foot pain + Red concentric squares with foot pain + Cycling days with foot pain
- Triangles post-birthday - Circles pre-birthday